

The Most Cost-Effective Way to Meet Code



Ultrasonic for your Price Sensitive Projects 10% Off Promotion

Ultrasonic wall switch occupancy sensors are the best choice for stall restroom projects, performing well at a lower price point. Ultrasonic waves fill the volume of the restroom. Since ultrasonic does not require line of sight, our sensors detect occupancy behind a closed restroom stall and keep the lights on.

STEINEL's 1-button Ultrasonic switch is perfect in a restroom with 2 or more stalls. The 2-button switch allows you to control 2 switch loads, such as both lighting and fan in a restroom.

Features Include:

- 180° coverage pattern
- Adjustable ultrasonic reach setting from 25% to 100%
- Switch link communication allows up to 4 sensors to be grouped together
- Decorative style wall plate sensor in white and light almond matching colors



US WLS 1



US WLS 2



CALL YOUR LOCAL STEINEL REP FOR PRICING AND AVAILABILITY

Special Low Pricing While Supplies Last
US WLS 1: PN 66160 (white) & 66170 (light almond)
US WLS 2: PN 66190 (white) & 66200 (light almond)

sales@steinel.net | 800.852.4343 | steinel.net

STEINEL[®]
PROFESSIONAL

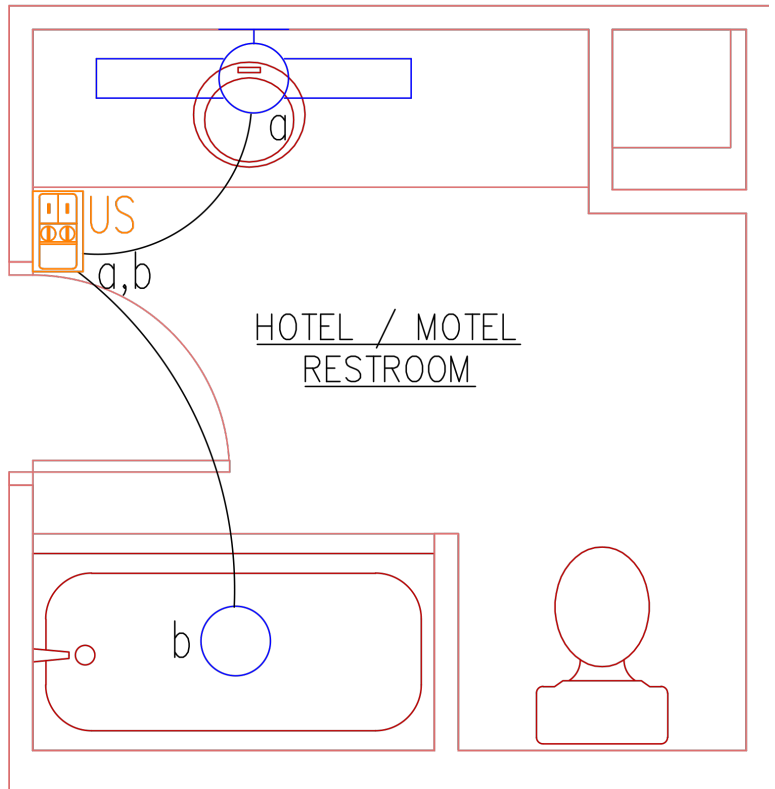
Wherever the best is needed.

Application Solutions for Wall Switches

Hotel Restroom

Control Needs: Manual control with automatic off of both lighting and exhaust fan or shower and vanity.

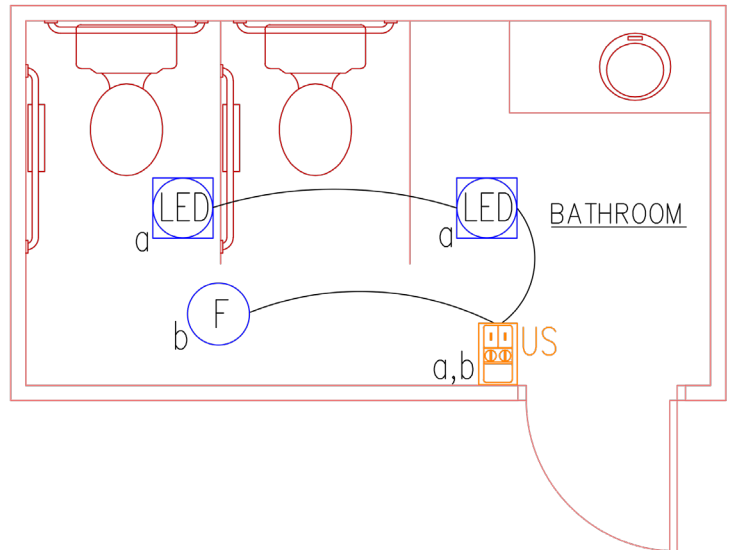
Solution: Ultrasonic wall switch sensor with dual relays to control two loads.



Public Restroom

Control Needs: Manual control with automatic off of both lighting and exhaust fan.

Solution: Ultrasonic wall switch sensor with dual relays to control two loads.



CALL YOUR LOCAL STEINEL REP FOR PRICING AND AVAILABILITY

Special Low Pricing While Supplies Last
US WLS 1: PN 66160 (white) & 66170 (light almond)
US WLS 2: PN 66190 (white) & 66200 (light almond)

sales@steinel.net | 800.852.4343 | steinel.net

STEINEL[®]
PROFESSIONAL

Wherever the best is needed.